

SONANCE

OUTDOOR SPECIFICATION GUIDE



WELCOME TO SONANCE

At Sonance, we believe that audio should sound superb. That is a given. We at Sonance also believe that speakers should blend in with the design of a space, whether it is a home, a business, indoors or outdoors; speakers should be an integral part of the design of a space in addition to providing excellent, comfortable listening enjoyment. The right choice not only complements your design, it becomes a part of the design, as deliberate and personal as the flooring below and the lighting above.

Over 30 years since inventing the first in-wall speaker, we realize that our history, innovative approach and relationships not only drive our dedication to the audio channel, but also inform our unique TRUFIG mounting technology and inspire the creation of our IPORT solutions. It is these core values that will continue to lead the way for whatever we might dream up next. We are so proud to invite you to experience the new Sonance: a simple brand refresh that both recalls our roots and launches us boldly into the future. This is SONANCE: BEYOND SOUND.

TABLE OF CONTENTS

1-4	SONANCE
5-26	OUTDOOR AUDIO
9-12	Sonance Landscape Series
13-14	Omni
15-20	Sonance Garden Series
21-22	Sonance Patio Series
23-24	VP Extreme
25-26	Mariners and Rocks
27-28	AMPLIFIERS
29-30	DESIGN SERVICES
31	INDEX

SONANCE

BEYOND SOUND

DESIGNED TO DISAPPEAR

Technology should disappear into architecture...this simple philosophy continues to inspire everything we do. Our hidden audio solutions deliver an even, balanced sound experience that is nothing short of magical, blending into any style, installation, or budget.

AUTHENTIC PARTNERSHIP

Every day at our home base in San Clemente, CA, you will find passionate, immensely knowledgeable people forging some of the strongest relationships in our industry. From our customer-centric culture to our not-to-be-missed Studio Seminars, we aim to define what authentic partnership looks like. Connecting our strategy and products to your company, we help unlock the most value possible for your business. [OUR TEAM IS YOUR TEAM.](#)

A HERITAGE OF INNOVATION

The history of our independently-owned company is rooted in a deep knowledge of our customers and construction. From award-winning audio solutions to our unique TRUFIG mounting technology to our IPORT solutions that hold, charge, and protect tablets, customers rely on our culture of creativity to continue to push the boundaries of technology and design.

SONANCE
OUTDOOR
AUDIO

LANDSCAPES MEET SOUNDSCAPES

Sonance moves its award-winning audio philosophy of even, balanced coverage outdoors. With a range of all-weather products that are designed to deliver best-in-class performance and best-looking aesthetics in every exterior environment. From courtyards and patios to entire residential estates and resort gardens, Sonance is the undisputed leader in high fidelity sound for the great outdoors.



TRADITIONAL SPEAKER PLACEMENT

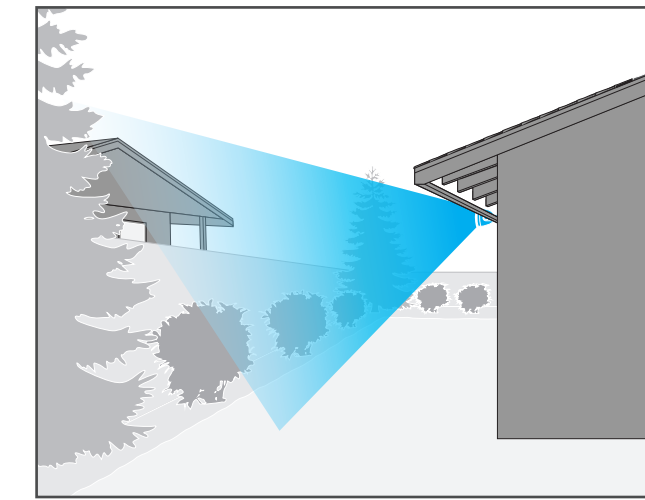
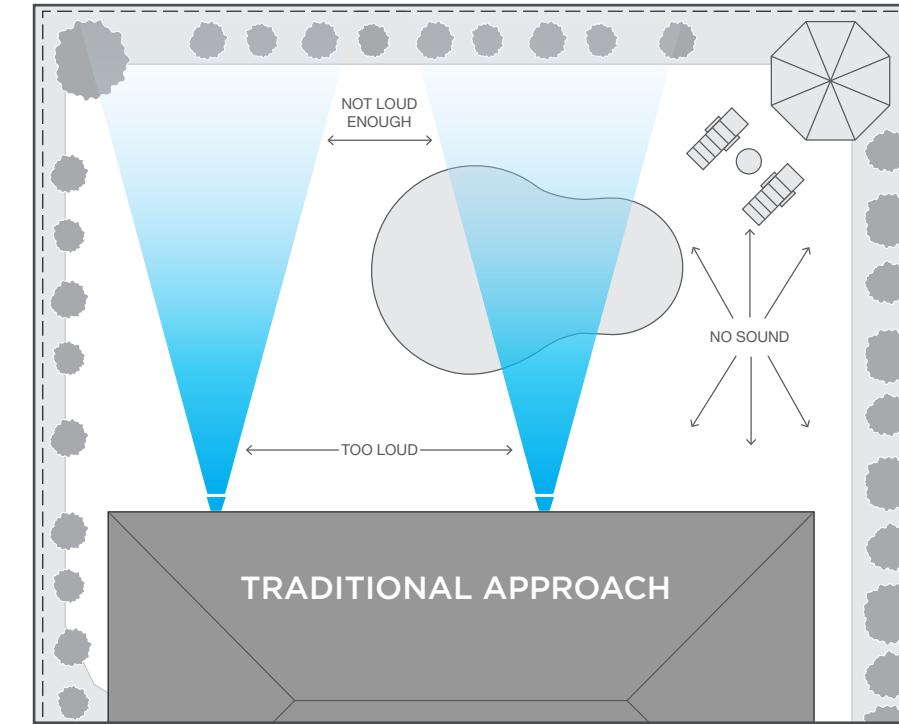
In typical outdoor audio installations a pair of speakers is usually tasked with filling an entire yard resulting in music that is either so loud that it becomes uncomfortable or so soft that it is un-engaging.

UNEVEN VOLUME

Speaker placement in one location creates very loud areas near those speakers and little to no sound further away. This can impact furniture arrangements and natural gathering areas.

UNBALANCED COVERAGE

It is easy to move in and out of the left and right channels and miss discrete information in the audio.



UNWANTED NOISE

Audio can spill over to neighboring properties creating unwanted disturbances.

DISCREET AUDIO SOLUTIONS

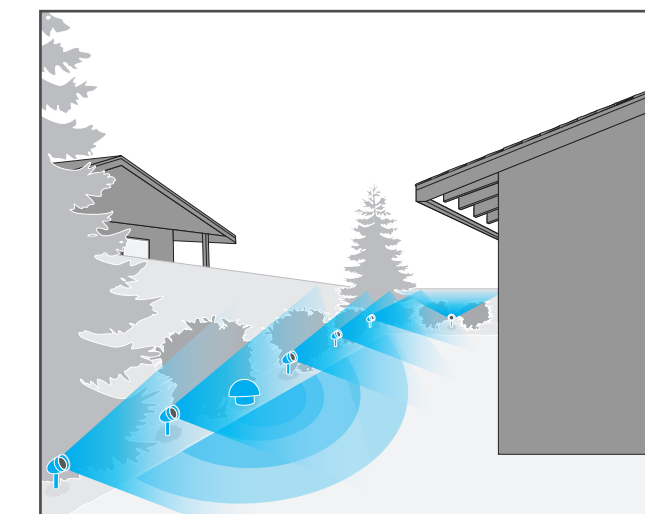
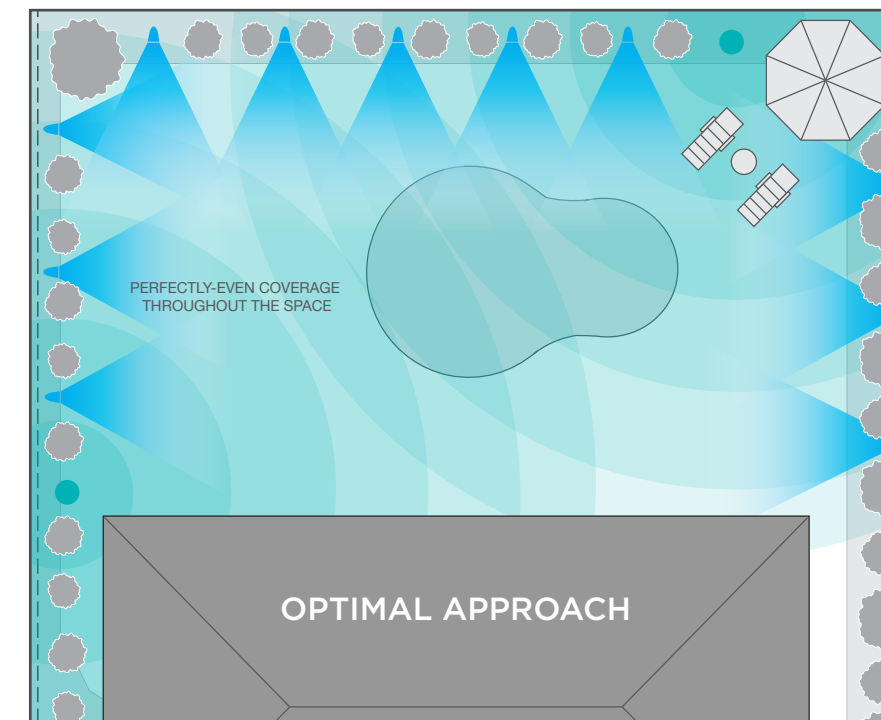
Designing a system composed of satellite speakers, subwoofers, amplifiers and DSP technology helps envelop a space fully in clear and balanced audio.

EVEN VOLUME

This approach is similar to a well layered lighting design that has no hot spots or dark spots, but rather provides smooth even coverage throughout the area.

EVEN, BALANCED COVERAGE

With satellite speakers and buried subwoofers strategically arranged around the perimeter of the property, audio is able to cover the area from all angles and comfortably immerse the audience.



NO DISTURBANCES

By positioning the system's speakers and subwoofers toward the listening area, no sound is projected out to the neighbors.

SONANCE LANDSCAPE SERIES



SONANCE LANDSCAPE SERIES IS FULLY SCALABLE AND EXPANDABLE

Sonance Landscape Series is the award-winning, industry reference in outdoor audio. SLS speakers and subwoofers are a fully scalable premium outdoor audio system that delivers perfectly even coverage and unbelievable sound quality throughout any space, small or large. Capable of impeccable fidelity at any volume and powerful output while hidden among landscape elements, SLS continues the Sonance standard of performance and design working in harmony to deliver an exceptional experience in any outdoor environment.

WEATHER THE ELEMENTS

Sonance Landscape Series speakers and subwoofers are designed to operate under the most extreme weather conditions, from -20 to 190°F (-29 to 88°C). Triple sealed enclosures, waterproof connectors and marine grade components ensure SLS will stand up to the harshest elements including surf, sun, sand and snow.



RAIN



SNOW



SUN



WIND



SEA



SAND



FLEXIBLE INSTALLATION

SLS speakers feature versatile mounting hardware options, allowing them to be positioned strategically to create the optimal sound experience.



ACCESSORIES



18" Premium Aluminum Ground Stake



9" Ground Stake



Surface Mount



Tree Mount



SATELLITES



LS6T SAT

LS6T SAT
 Dimensions (LxDia): 11 23/32" x 7 7/16"
 (297mm x 189mm)



LS4T SAT

LS4T SAT
 Dimensions (LxDia): 8 1/16" x 5 1/8"
 (205mm x 130mm)

SUBWOOFERS



LS15T SUB

LS15T SUB
 Overall Dimensions (WxH): 21 1/4" x 33 19/32" (540mm x 853mm)



LS12T SUB

LS12T SUB
 Overall Dimensions (WxH): 16 31/32" x 29 1/8" (431mm x 740mm)



HS12T SUB

HS12T SUB
 Dimensions (WxHxD): 16 1/8" x 16 1/8" x 16 1/8" (410mm x 410mm x 410mm)

SATELLITE SPEAKERS

Sonance Landscape Series satellite speakers are selectable for 70V/100V or 8 Ohm configuration and are designed borrowing performance features proven successful by other Sonance products. With new larger Klippel distortion treated drivers as seen in VP Extreme and the same Sonance Laminated Core Transformer as Sonance Professional Series products, SLS satellite speakers provide smooth, effortless bass and clear and natural treble.



SMOOTH AND POWERFUL BASS RESPONSE

Sonance Landscape Series subwoofers are available in 12" (305mm) and 15" (381mm) in-ground or 12" (305mm) hardscape solutions and are also 70V/100V or 8 Ohm configurable. With a laminar flow port supporting the in-ground subs and the Sonance Laminated Core Transformer featured in all three subs, Sonance Landscape Series subwoofers present the perfect punch for outdoor environments, filling the space with depth and detail.



Cover ON



Cover OFF

OMNIDIRECTIONAL OUTDOOR SPEAKER

EXCELLENCE

The OMNI-6T is the answer to most commercial outdoor needs with 360 degrees of audio output, providing exceptional coverage regardless of placement. This omnidirectional outdoor speaker features the Sonance Laminated Core Transformer for select-ability in commercial or residential applications, making it a great complement to any Sonance Professional Series product, Sonance Landscape Series product, or a system comprised solely of the OMNI-6T.



APPLICATIONS

The textured dark brown enclosure blends beautifully into ground cover, garden beds and foliage allowing the OMNI-6T to disappear into both commercial and residential applications such as resort gardens, hotel pool areas, theme parks, outdoor shopping malls, and estate gardens.

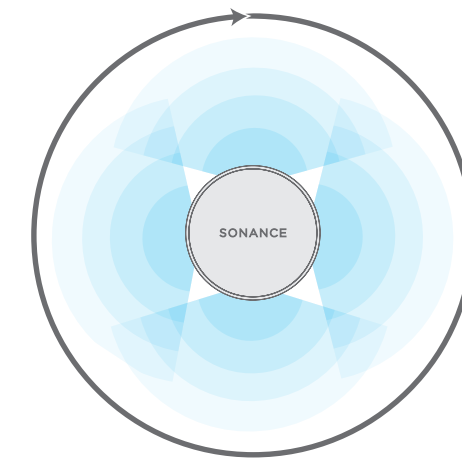
OMNIDIRECTIONAL OUTDOOR SPEAKER



OMNI-6T
Dimensions (DiaxH): 14 1/2" x 12" (368mm x 305mm)

SPEAKER FEATURES

The OMNI-6T features a 60W 70V/100V Sonance Laminated Core Transformer with multiple transformer taps and an 8 Ohm bypass for superior sonic performance and simply executed system setup. Install OMNI-6T buried or above ground, as a system comprised of multiple OMNI speakers or integrated as part of a Sonance Landscape Series system or Professional Series system. It is the ideal outdoor solution for both commercial and residential landscapes.



Four-Tweeter Array
360° Coverage Plan View

360° DISPERSION

OMNI-6T provides truly omnidirectional coverage. With its wideband, four-tweeter array and its up-firing 6.5" (165mm) woofer, the Sonance OMNI-6T achieves full fidelity and full range performance.



SONANCE GARDEN SERIES



PERFORMANCE AND SIMPLICITY

Sonance Garden Series strikes the perfect blend between performance and affordability and is positioned between the award-winning excellence of Sonance Landscape Series and the system simplicity of Sonance Patio Series.

SONANCE GARDEN SERIES

FEATURES AND FLEXIBILITY

Featuring a 3.5" (89mm) anodized aluminum woofer and a 3/4" (19mm) polyurethane dome tweeter, the Sonance Garden Series two-way satellite design brings surprising detail to outdoor spaces. The replaceable grille makes servicing the system a breeze and the adjustable speaker knuckle allows the SGS SAT to be precisely positioned for great coverage. The system installation is flexible with multiple available installation options, from the included 1/2" (13mm) NPS ground stakes to the optional surface mount or tree mount accessories.

The 10" (254mm) dual voice coil, in-ground subwoofer provides amazing bass to complete the outdoor music experience. Taking advantage of our latest laminar flow port design, the SGS SUB delivers smooth bass that is ready for the elements. The high-density polyethylene enclosure is fully sealed and non-corroding, ensuring years of enjoyment.

WEATHER THE ELEMENTS

The Sonance Garden Series speakers and subwoofers are designed to operate under the most extreme weather conditions, from -20 to 190°F (-29 to 88°C). Triple sealed enclosures, waterproof connectors and marine grade components ensure SGS will stand up to the harshest elements including surf, sun, sand and snow.



SGS 8.1 SYSTEM

Sonance Garden Series is flexible for system design from a single four conductor wire. Our DSP Amplifiers will support speaker layouts of 8.1/8.2, 12.1/12.2 up to 16.1/16.2 configurations, helping to set the mood for engaging outdoor music in spaces up to 3,500 square feet (325 square meters). Sonance Garden Series can be expanded for up to 16 speakers and two subwoofers on a single amplifier.



SGS 8.1 SYSTEM

SGS ADD-ON PRODUCTS

2-125 AMPLIFIER



SR 2-125
Dimensions with feet (WxHxD): 8 5/8" x 2 1/8" x 16 13/16"
(219mm x 54mm x 427mm)

SGS SATELLITE 4-PACK



SGS SAT 4-PACK
Dimensions with Stake (LxDia.): 16 1/2" x 4 1/2"
(419mm x 114mm)

SGS SUBWOOFER

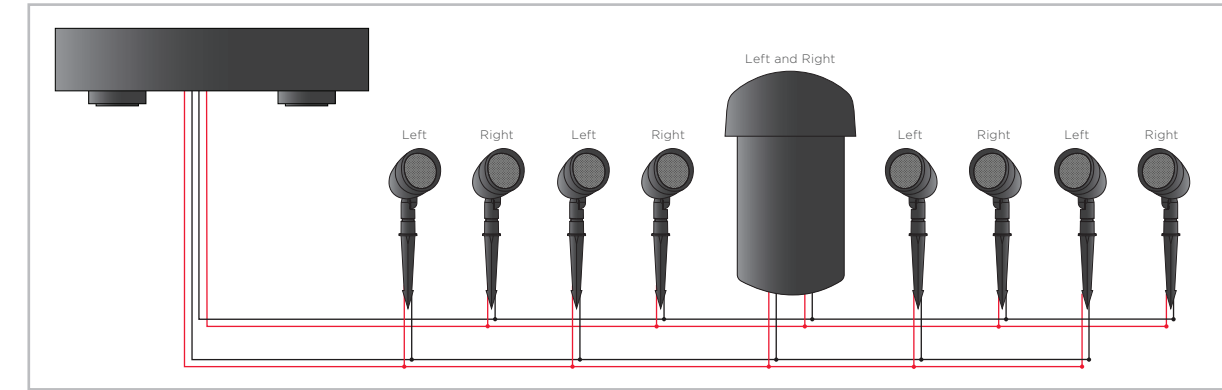


SGS SUB
Overall Dimensions (LxDia.): 24 13/16" x 15"
(630mm x 381mm)

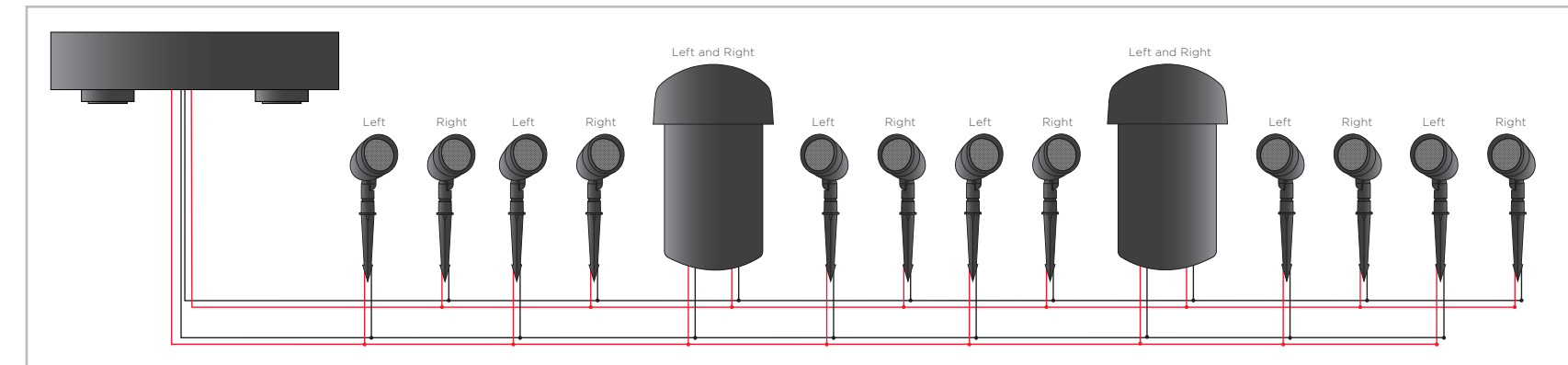


SONANCE GARDEN SERIES

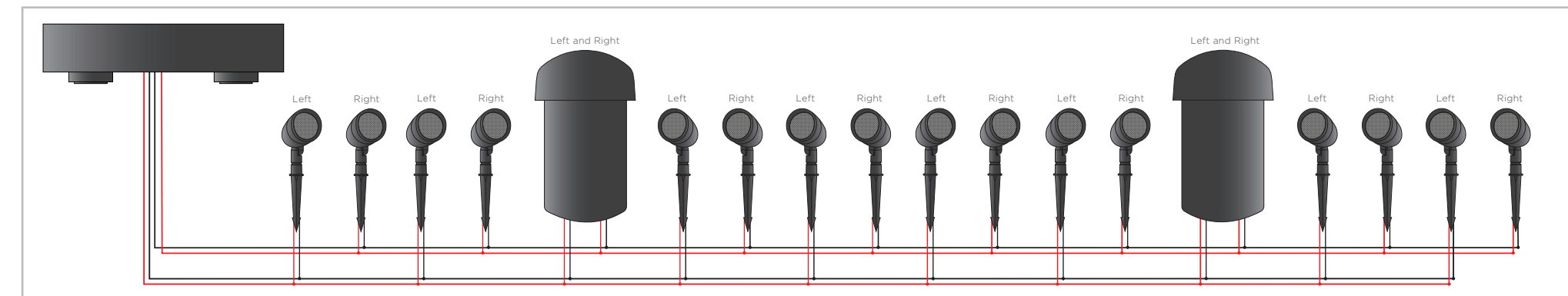
SONANCE GARDEN SERIES CONFIGURATIONS



SONANCE GARDEN SERIES 8:1 CONFIGURATION



SONANCE GARDEN SERIES 12:2 CONFIGURATION



SONANCE GARDEN SERIES 16:2 CONFIGURATION

SONANCE PATIO SERIES

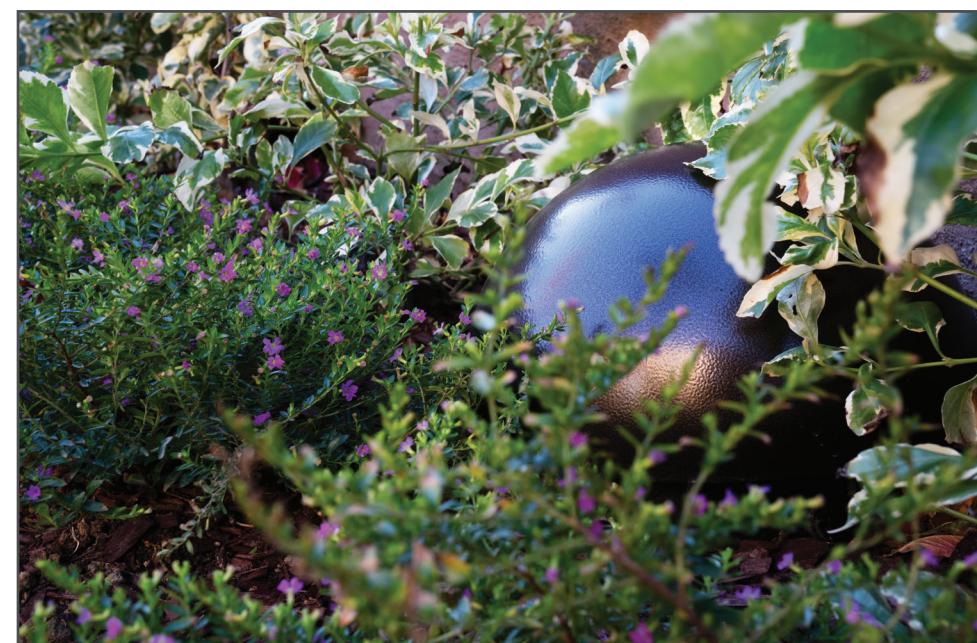


PERFECT QUALITY, PERFECT COVERAGE

The smallest outdoor system for the smallest outdoor spaces, Sonance Patio Series blends discreetly into the planter beds of patios and courtyards. With four staked satellite speakers and one subwoofer capable of being buried, Sonance Patio Series System provides enough coverage and range for impressive listening enjoyment in outdoor spaces up to 1,000 square feet (93 square meters) or up to 2,000 square feet when expanded to 8 speakers and 2 subwoofers (186 square meters).

DESIGNED TO DISAPPEAR

Sonance Patio Series speakers and subwoofers are made from weatherized, earth-toned materials to beautifully blend in with the landscape surrounding it, allowing the system to disappear into your space.



SONANCE PATIO SERIES 4.1 SYSTEM WITH AMPLIFIER



SONANCE PATIO SERIES 4.1 System with SR 2-125 Amplifier

SONANCE PATIO SERIES 4.1 SYSTEM



SONANCE PATIO SERIES 4.1 System without Amplifier



Visual Performance Extreme carries the design success of Sonance Visual Performance speakers delivered in a highly enduring construction for extreme elements making them perfect for marine environments, patios, saunas and spas.

EXTREME POST CAPTURE

With extreme circumstances in mind, Sonance developed Extreme Post Capture grille retention technology (XPC) to securely grip each Extreme grille to its speaker. This protects the grilles from harsh encounters with wind and high pressure washing. Extreme square grille adapters and grilles seamlessly transform any Extreme round speaker into a square finish without the need for additional cutting. Also featuring Sonance XPC technology, square grilles will remain intact when presented with intense wind or water.



SQUARE ADAPTERS



VPXT8SQ

Dimensions (WxH): 11" x 11" (279mm x 279mm)

VPXT6SQ

Dimensions (WxH): 9 7/8" x 9 7/8" (251mm x 251mm)

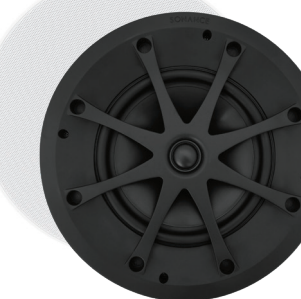
IN-WALL



VPXT6

VPXT6
Dimensions (WxHxD): 8 3/8" x 12 1/4" x 2 1/2"
(213mm x 311mm x 64mm)

IN-CEILING



VPXT8R

VPXT8R
Dimensions (DiaxD): 11 5/8" x 3 3/4"
(295mm x 95mm)



VPXT6R



VPXT6R SST

VPXT6R | VPXT6R SST
Dimensions (DiaxD): 9 3/4" x 3 1/2"
(248mm x 89mm)

MARINERS & ROCKS

PERFORMANCE

Sonance has a range of high-performance outdoor speakers for any traditional installation. Rock speakers and subwoofers in natural colors and textures are designed to hide in garden beds. Mariner speakers are perfect for courtyards, patios and yachts.



MARINERS

Sonance Mariner speakers feature an innovative front-mounted terminal connection that not only makes wiring easier, it safeguards the speaker terminals against moisture and the elements. Mariner speakers feature an exclusive Fastmount® bracket system that enables simple push and lock to fasten each speaker into place - no threaded knobs or extra hardware necessary. Once mounted, the speaker can be easily pivoted to direct the sound where you want it, and they will stay where you position them without drooping or slipping over time. Finished with a perfect fit trimless grille engineered to remain securely in place, Mariner speakers will contribute a sleek and clean look to any outdoor space.



ROCKS

Sonance rock speakers utilize a durable weather-resistant construction that is built to withstand the harshest outdoor environments. Featuring waterproof drivers, the Sonance RK63 and RK83 deliver clean articulate sound while standing up to the elements. For those wanting even more impressive sound outdoors, the optional RK10W subwoofer features the same durable construction with a 10" (254mm) polypropylene cone woofer for added bass response.

MARINERS

Available in black and white



Mariner 54



Mariner 54 SST



Mariner 56



Mariner 64



Mariner 64 SST



Mariner 66



Mariner 86

SMALL MARINER 54 | MARINER 54 SST | MARINER 56

Dimensions (WxHxD): 6 3/8" x 10 3/32" x 5 11/16"
(162mm x 256mm x 144mm)

MEDIUM MARINER 64 | MARINER 64 SST | MARINER 66

Dimensions (WxHxD): 7 1/2" x 12 5/32" x 6 7/8"
(191mm x 308mm x 174mm)

LARGE MARINER 86

Dimensions (WxHxD): 9" x 14" x 8 19/32"
(229mm x 356mm x 218mm)

ROCKS

Available in brown and granite



RK63



RK83

MEDIUM RK63

Dimensions (WxHxD): 13 3/4" x 11" x 11"
(349mm x 279mm x 279mm)

LARGE RK83

Dimensions (WxHxD): 17 1/4" x 12 1/2" x 14"
(438mm x 318mm x 356mm)

ROCK WOOFER

Available in brown and granite



RK10W Woofer

RK10W

Dimensions (WxHxD): 19 3/8" x 16 7/8" x 14 3/8"
(492mm x 429mm x 365mm)

ADAPTABLE AND FLEXIBLE

Whether a space is a new construction, remodel, large or small, DSP amplifiers are powerful and flexible to work with various combinations of Sonance speakers and subwoofers. Sonance also offers 70V/100V DSP amplifiers that can be set for 8 Ohm or 70V/100V applications, making them perfect for commercial applications as well as residential.

AMPLIFIERS



DSP 2-750 MKII

DSP 2-750 MKII Output Power per Channel: 500W RMS (8 Ohms)
750W RMS (70V), 2000W (bridged at 8 Ohms)



DSP 2-150 MKII

DSP 2-150 MKII Output Power per Channel: 150W RMS (8 Ohms)
224W RMS (4 Ohms), 473W (bridged at 8 Ohms)



2-100

2-100 Output Power per Channel: 100W RMS (8 Ohms)
156W RMS (4 Ohms), 325W (bridged at 8 Ohms)

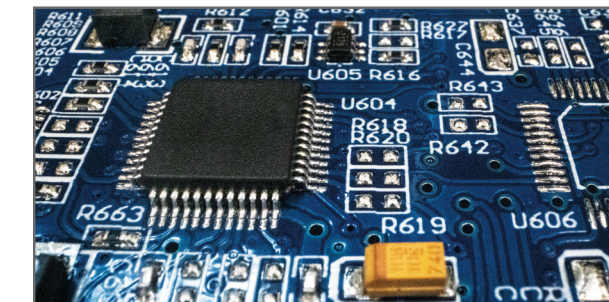


SR 2-125

SR 2-125 Output Power per Channel: 125W RMS (8 Ohms)
200W RMS (4 Ohms)

HIGH-RESOLUTION PLAYBACK

At the core of every Sonance DSP amplifier is a powerful 24 bit/96K DAC, capable of handling a full 4608 Kbps of audio data. Sonance DSP amplifiers enable listeners to enjoy the full clarity and output of whatever audio passes through, from MP3 to full high-resolution audio. Sonance DSP amplifiers prepare any audio system for what's next.



DIGITAL INPUT MODULE & HYBRID INPUT MODULE

Sonance Input Modules are the ultimate enhancements to a Sonance DSP amplifier. These input cards enable a direct connection to a digital source ensuring the signal passes through to the 24 bit/96kHz capable DAC in the amplifier with the shortest signal path possible and at the highest performance level.



Digital Input Module



Hybrid Input Module

DIM MODULE
Dimensions (WxHxD): 3" x 1 1/2" x 3 13/32"
(75mm x 38mm x 87mm)
Depth with RCAs: 3 11/16" (93mm)

HIM MODULE
Dimensions (WxHxD): 3" x 1 1/2" x 3 13/32"
(75mm x 38mm x 87mm)
Depth with RCAs: 3 11/16" (93mm)

SONANCE DESIGN SERVICES

Ready to experience Sonance but not sure where to begin? Let us customize a layout for you. Sonance offers design services to support our customers. Our role is to help you maximize the value and performance of your Sonance speaker system. Service representatives are available whenever you need them to make sure your system performs as expected.

Submit requests to Sonance Design Services at <https://www.jotform.com/DIQuotes/new-sonance-design-service-form>



OUTDOOR DESIGN

Landscape Series Design Service provides a custom layout program for Sonance Landscape Series speaker systems. This service will convert any project's landscape plan into a discreet layout for each zone showing the best possible placement for all of the satellites and subwoofers, along with the appropriate recommended amplification.

SONANCE PRODUCT INDEX

SONANCE LANDSCAPE SERIES

SKU	MODEL	EA	12
93369	LS4T SAT	EA	12
93370	LS6T SAT	EA	12
93371	LS12T SUB	EA	12
93372	LS15T SUB	EA	12
93373	HS12T SUB		

SONANCE LANDSCAPE SERIES 70V SYSTEMS

93382	LS4T SAT/LS12T 8.1 System w/ DSP	EA	-
93409	LS4T SAT/LS12T 8.2 System w/ DSP	EA	-
93410	LS6T SAT/LS12T 6.1 System w/ DSP	EA	-
93411	LS6T SAT/LS12T 8.2 System w/ DSP	EA	-
93412	LS6T SAT/LS15T 8.1 System w/ DSP	EA	-

SONANCE LANDSCAPE SERIES 8 OHM SYSTEMS

93383	LS6T SAT/LS12T 4.1 System w/ 2 DSP 2-750 MKII	EA	-
93413	LS6T SAT/LS12T 4.1 System w/ 2 DSP 2-150 MKII	EA	-

SONANCE LANDSCAPE SERIES ACCESSORIES

93466	Ground Post 18"	EA	10
92924	Ground Stake 9"	EA	10
92927	Tree Mount	EA	10
92926	Surface Mount	EA	10

SONANCE GARDEN SERIES

93433	SGS 8.1 System + Amplifier	EA	18
93432	SGS 8.1 System	EA	18
93135	SR 2-125 Amplifier	EA	18
93435	SGS SUB	EA	18
93436	SGS SAT 4-Pack	EA	18

OMNIDIRECTIONAL SPEAKER

40196	OMNI-6T	EA	14
-------	---------	----	----

SONANCE PATIO SERIES

93429	Patio 4.1 System	EA	22
93430	Patio 4.1 System + Amplifier	EA	22

VP EXTREME

93338	VPXT6	PR	24
93339	VPXT6R	PR	24
93340	VPXT6R SST	EA	24
93341	VPXT8R	PR	24
93342	VPXT6SQ Square Adapter and Grille	PR	24
93343	VPXT8SQ Square Adapter and Grille	PR	24

MARINERS

93148	Mariner 54 WHT	PR	26
93149	Mariner 54 BLK	PR	26
93150	Mariner 56 WHT	PR	26
93151	Mariner 56 BLK	PR	26
93152	Mariner 64 WHT	PR	26
93153	Mariner 64 BLK	PR	26
93154	Mariner 66 WHT	PR	26
93155	Mariner 66 BLK	PR	26
93156	Mariner 86 WHT	PR	26
93157	Mariner 86 BLK	PR	26
93158	Mariner 54 SST WHT	EA	26
93159	Mariner 54 SST BLK	EA	26
93160	Mariner 64 SST WHT	EA	26
93161	Mariner 64 SST BLK	EA	26

ROCKS

92743	RK63 Granite	PR	26
92744	RK63 Brown	PR	26
92745	RK83 Granite	PR	26
92746	RK83 Brown	PR	26
92887	RK10W Woofer Granite	EA	26
92888	RK10W Woofer Brown	EA	26

AMPLIFIERS

93091	SONAMP 2-100	EA	28
93378	DSP 2-150 MKII	EA	28
93379	DSP 2-750 MKII	EA	28
93135	SR 2-125	EA	28
93099	Digital Input Module	EA	28
93361	Hybrid Input Module		

SONANCE

BEYOND SOUND

©2020 Sonance. All rights reserved. Sonance, IPORT and TRUFIG are registered trademarks.

Due to continuous product improvement, all features and specifications are subject to change without notice.
For the latest Sonance product specification information visit our website: www.sonance.com

Sonance • 991 Calle Amanecer • San Clemente, CA 92673 USA
11.20.2020 | 338-004